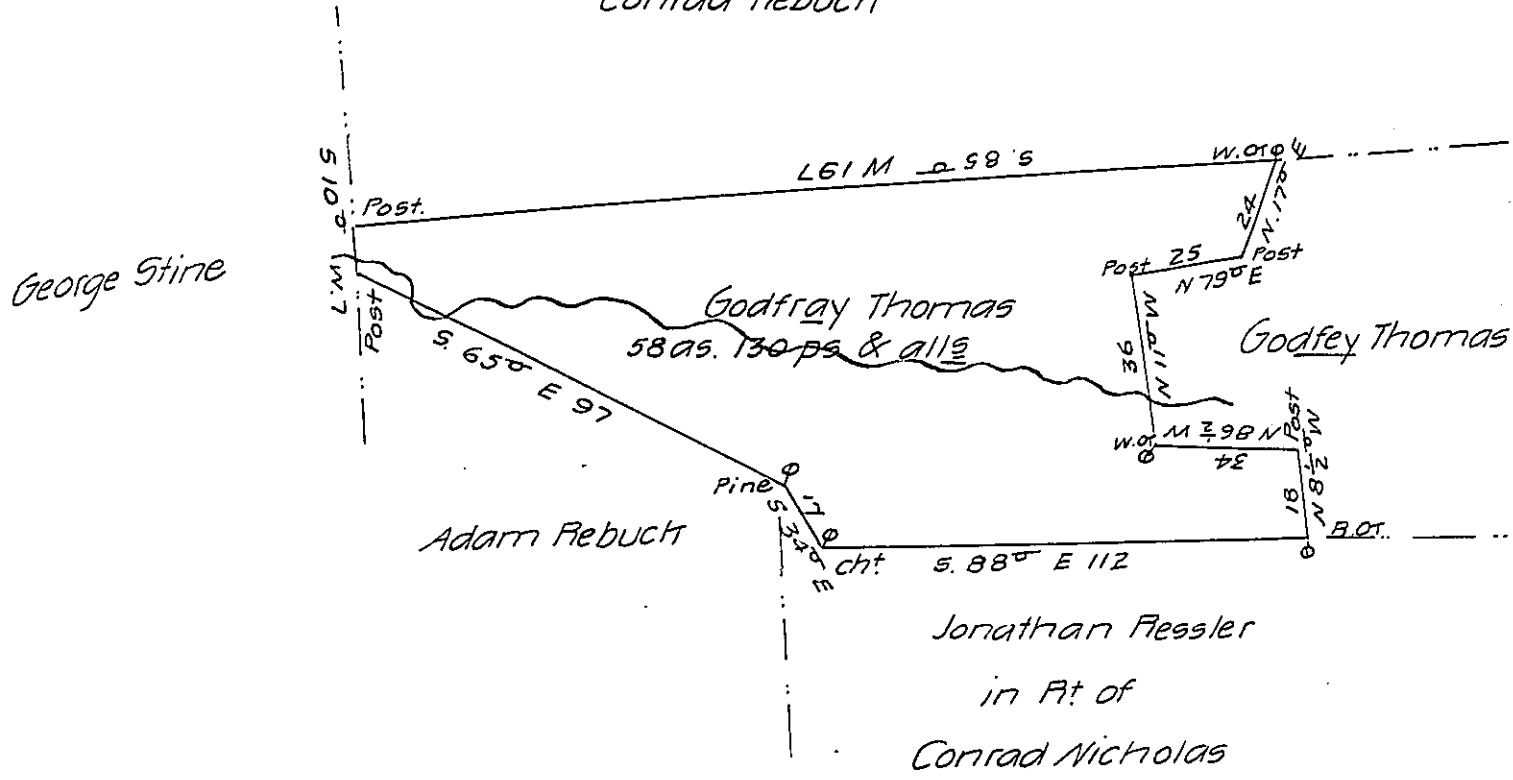


Michael Brosius  
in Pt of  
Conrad Rebuch



Situate in Upper Mahanoy Township Northumberland County  
Containing Fifty eight acres & one hundred & thirty perches & the us-  
ual allowance of six per cent &c. Surveyed unto Godfrey Thomas on  
the 25th day of December 1834 (agreeable to the lines & corners as mark-  
ed on the 15th day of April 1812 by Thos. Woodsides then D.S. for Northum-  
berland County) in pursuance of his Warrant bearing date ~~on the~~ on the  
first day of October 1811.

Wm Laird D.S.

To Jacob Spangler Esqr.

Surveyor General.

IN TESTIMONY that the above is a copy of the original remaining on file in  
the Department of Internal Affairs of Pennsylvania, made  
conformably to an Act of Assembly approved the 16th day of  
February, 1833, I have hereunto set my Hand and caused  
the Seal of said Department to be affixed at Harrisburg,  
this fifth day of March 1907

*Isaac B. Brown*  
Secretary of Internal Affairs.